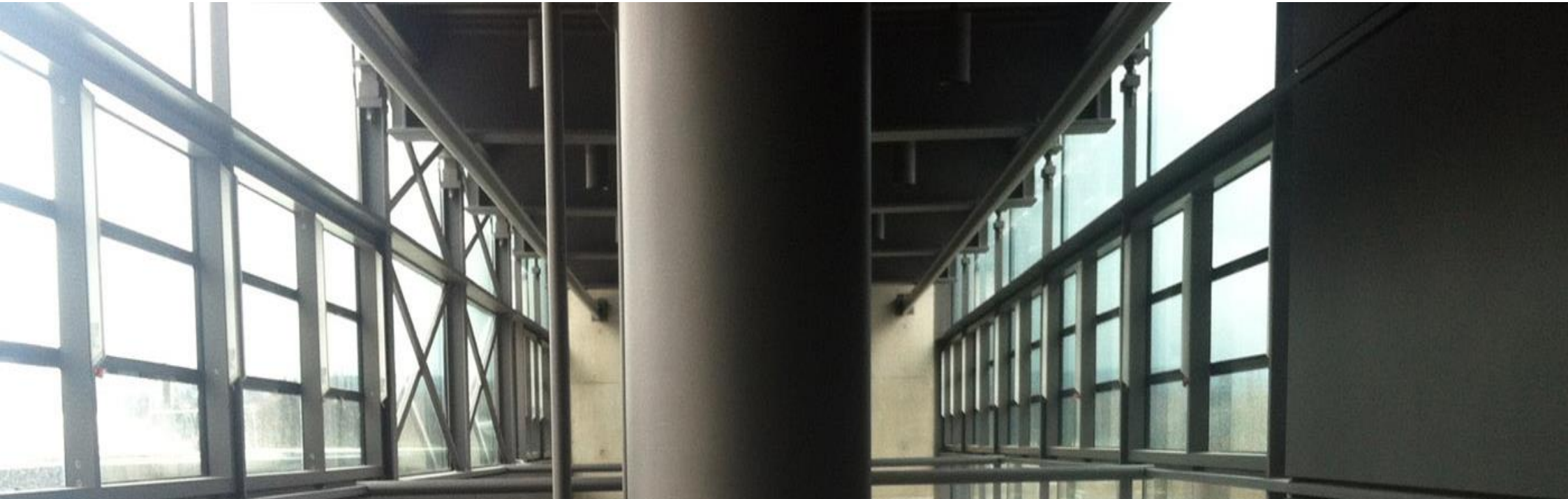
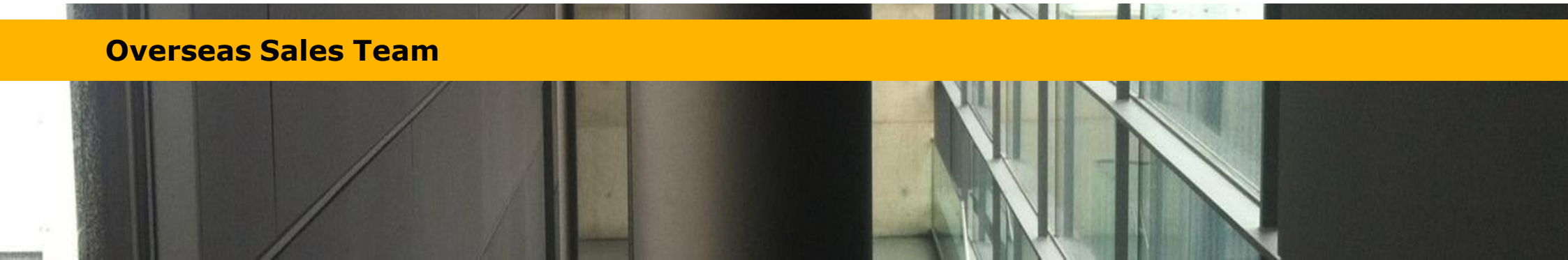


*wilo*



## High Rise Building

**Overseas Sales Team**




54F, 190 meter inspiration  
space for flowing ideas.

High Efficiency<sup>190</sup>





High Efficiency<sup>422,000</sup>



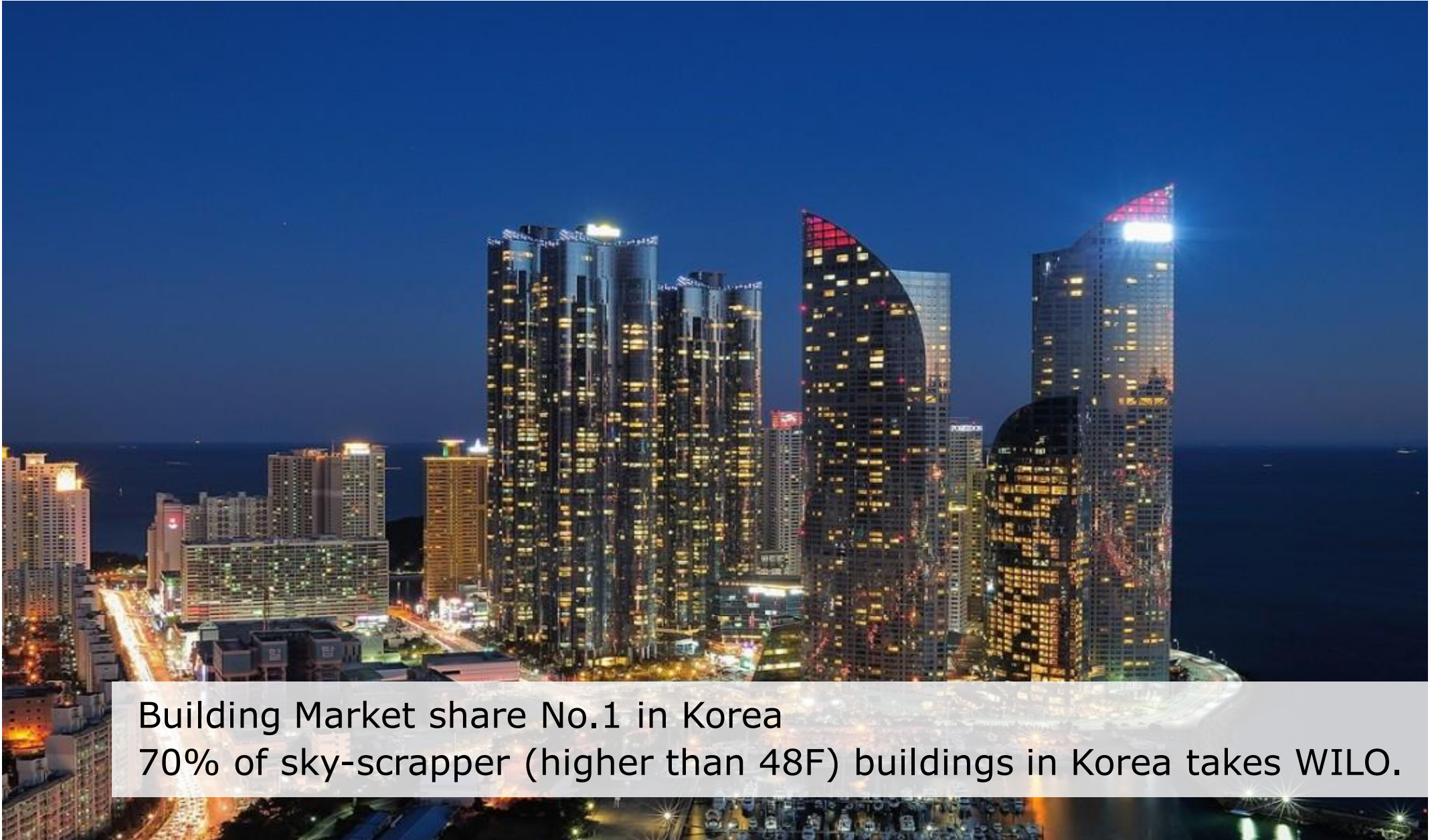
422,000 m<sup>2</sup>, 85F, 420m – clean solutions to the last detail.  
Federation Business Complex in Moscow, Russia.





Luxury life in 66F small city. Penta Port in Asan, Korea.





295 Employees, 41 R&D Engineers







High quality products made in 51,670m<sup>2</sup> wide factory in Korea





High Efficiency<sup>80</sup>

WILO is providing all minimum IE3 level efficiency products in Korea.



## Benefits of Wilo Solution



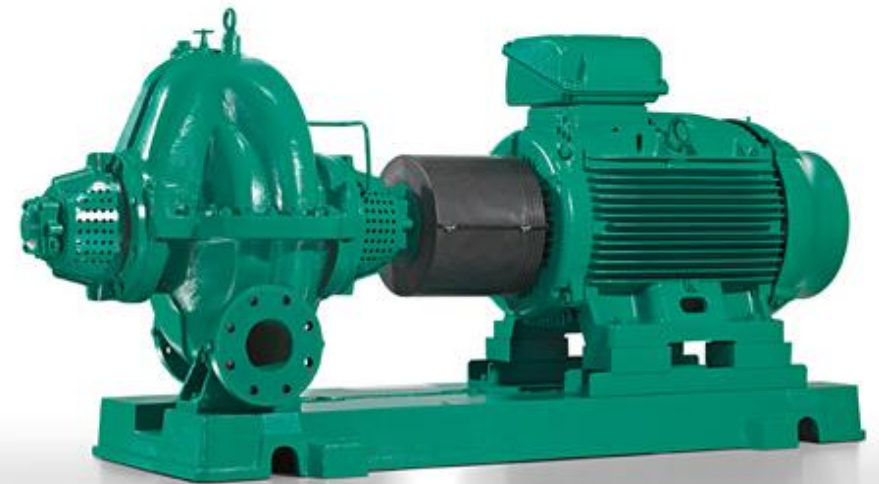
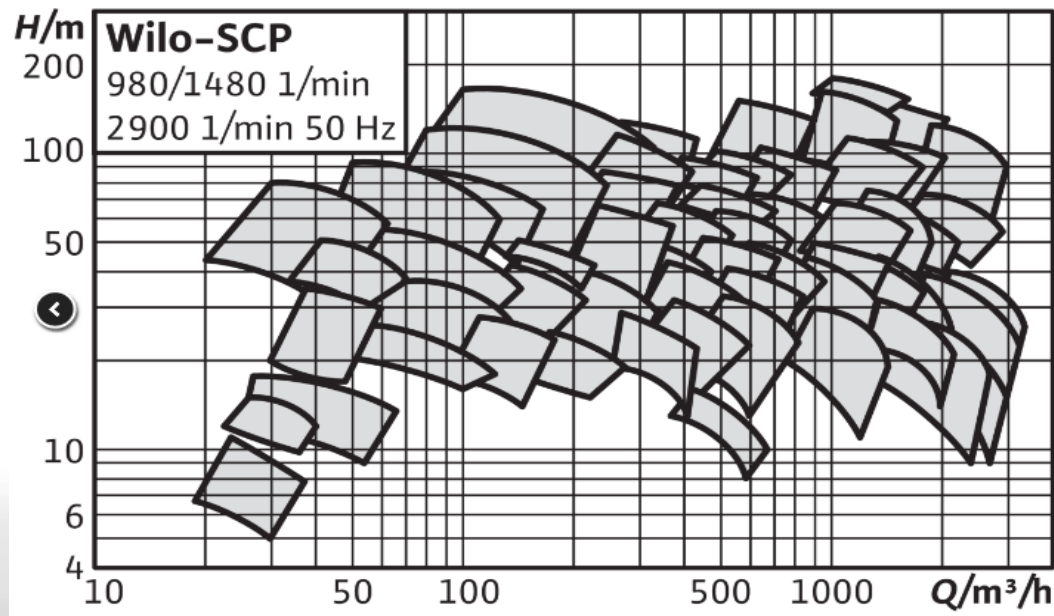
Heating, air-conditioning, cooling.

Water supply.

Drainage and sewage.



- Efficient hydraulic for large volume flows
- With energy-efficiency motors as per IE4 as an option
- Simple maintenance
- Reduced noise and vibration level

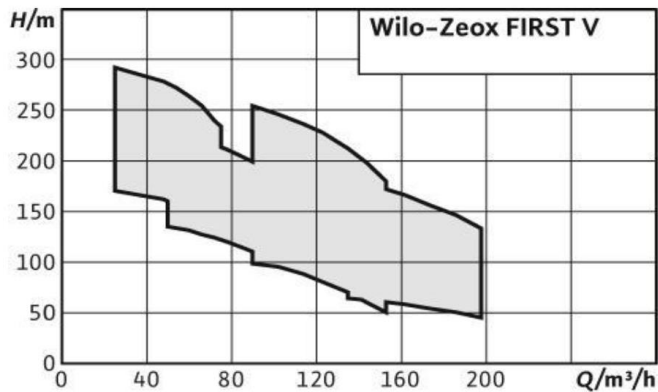




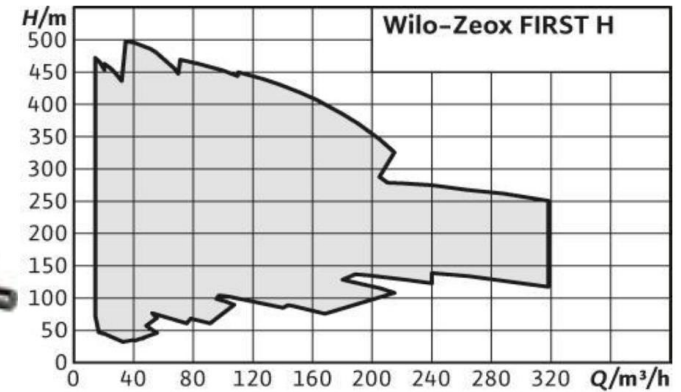
- The first high-efficiency glanded pump.
- Up to 70 % energy savings  
thanks in part to the High-Efficiency-Drive
- High-efficiency EC motor  
with efficiency above the IE4 limit values  
in accordance with IEC 60034-31 Ed.1



- High efficiency IE3 motor (standard IEC)
- Complies with ErP Directive with MEI  $\geq 0.4$
- High quality materials
- Modular and robust design
- Safe operation with mechanical seal flushing device as standard
- Dynamically and hydraulically balanced impellers



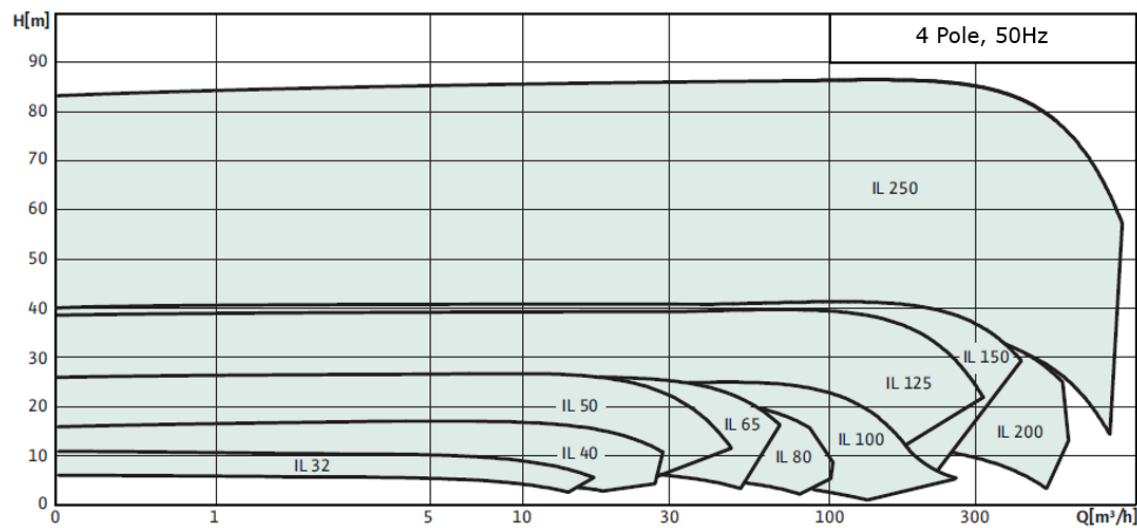
**Wilo-Zeox First V**  
Vertical design



**Wilo-Zeox First H**  
Horizontal design



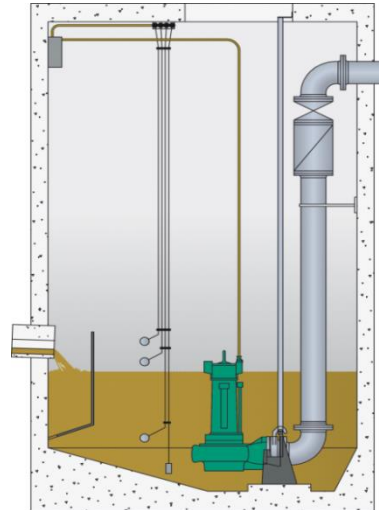
- Easy maintenance(Back pull-out design)
- Space-saving compact design
- IEC standard motor
- Hydraulic design with CFD
- Cataphoresis coating



## Wet sump installation (BA)

### Advantages:

- Low investment costs for building and assembly
- Little space required for the pumps
- Installation and removal by suspension device
- Use of T-motors





## Dry sump installation (TA)

### Advantages:

- Internal cooling system
- Flood-proof pump
- Pump can be controlled during operation
- Maintenance-friendly due to accessible pump chamber
- Use of F; FK, HC and FKT-motors

